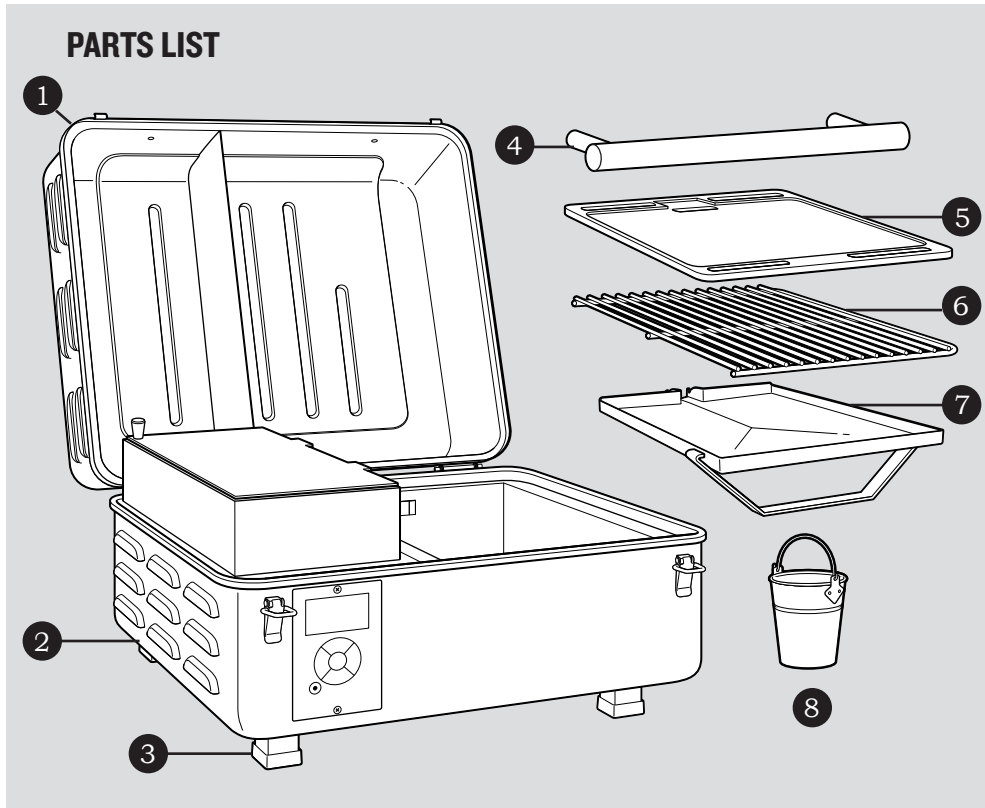

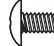

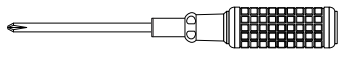
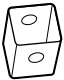

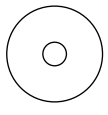


ASSEMBLING YOUR GRILL

READ ALL INSTRUCTIONS BEFORE INSTALLING AND USING THE APPLIANCE



HARDWARE PACK

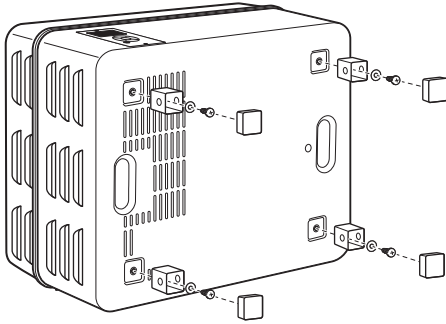
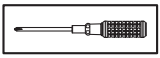
- A** Bolts: 1/4-20x 5/8" (6 pcs.)*  
- B** Washers: 1/4" Flat (6 pcs.)* 
- C** #2 Phillips Screwdriver 
- D** Legs (4 pcs.) 
- E** Leg End Caps (4 pcs.) 
- F** Mica Washers (2 pcs.)* 
Shape may vary.

Part	Description
1	Grill Lid
2	Grill Body
3	Feet with Caps
4	Lid Handle

Part	Description
5	Cast-Iron Griddle
6	Grill Grate
7	Grease Drip Tray
8	Grease Bucket

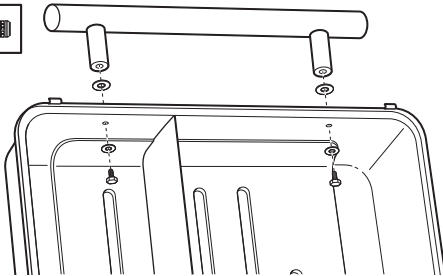
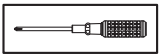
***NOTE:** Handle bolts, washers, and Mica washers are shipped installed on the handle.

1 INSTALL LEGS



In this step: 3 A x 4 B x 4 C x 1 D x 4 E x 4

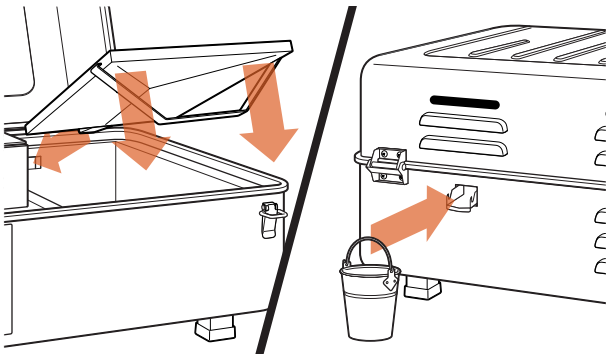
2 INSTALL LID HANDLE



NOTE: Handle hardware is installed on handle.

In this step: 4 A x 2 B x 2 C x 1 F x 2

3 INSTALL GREASE DRIP TRAY AND BUCKET

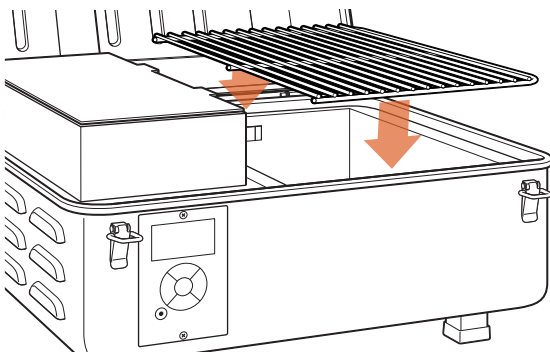


NOTE: Be sure the grease drain spout on the grease drip tray extends through the opening in the back of the grill.

IMPORTANT: Always be sure to position the grease drain bucket under the spout during use!

In this step: 7 8

4 INSTALL PORCELAIN-COATED GRILL GRATE



In this step: 6